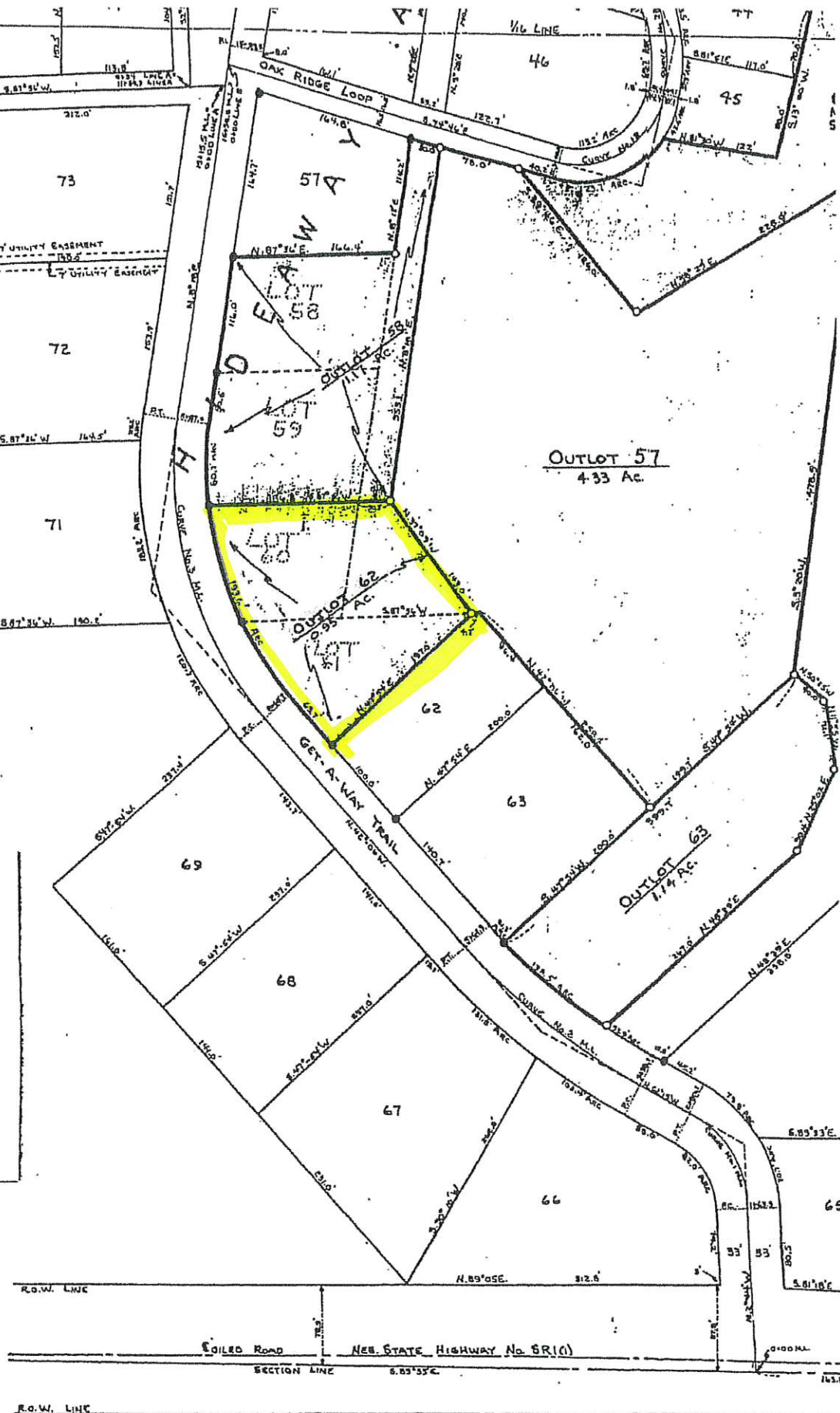


STATE OF NEBRASKA, } SS.
KNOX COUNTY, }
COUNTY

Filed for Record and Entered on
Numerical Index this 21 day
of Sept. A.D. 1927 at 1 o'clock
and 15 minutes P.M. and recorded
in Book 1 Page 144

Wm. N. Iseman, Jr.
County Clerk and Ex-Officio Registrar of Deeds
By James M. Fischer
Fee \$ 13.85 Recording Clerk



I, B. Johnson, being first duly sworn, does hereby state that he is a competent Surveyor; that he has closely supervised and surveyed the plat of Outlots 39, 45, 57, 58, 62, and 63 in the S.E. 1/4, Section 14, Twp. 33 North, Range 2 West of the 6th P.M., Nebraska; That said Outlots are adjacent to or part of "Hideaway Acres" Addition to Knox County, Nebraska; that is the original, accurate, true and correct plat of the above described Outlots; and that he surveyed and platted at the instance and request of the owner. The above and foregoing Outlots are comprised of the following real estate:

OUTLOT 39

A tract of land located in the N.W. 1/4 of the S.E. 1/4, Section 14, Twp. 33 N., Range 2 West of the 6th P.M. in Knox County, Nebraska, containing 1.50 acres, more or less.

OUTLOT 45

A tract of land located in the S.E. 1/4 Section 14, Twp. 33 N., Range 2 West of the 6th P.M. in Knox County, Nebraska, containing 2.00 acres, more or less.

OUTLOT 57

A tract of land located in the S.W. 1/4 of the S.E. 1/4, Section 14, Twp. 33 N., Range 2 West of the 6th P.M. in Knox County, Nebraska, containing 4.33 acres, more or less.

OUTLOT 58

A tract of land composed of Lots 58 and 59 of "Hideaway Acres" Addition together with an adjacent unplatted tract, all being located in the S.W. 1/4 of the S.E. 1/4, Section 14, Twp. 33 N., Range 2 West of the 6th P.M. in Knox County, Nebraska, containing 1.17 acres, more or less.

OUTLOT 62

A tract of land composed of Lots 60 and 61 of "Hideaway Acres" Addition together with an adjacent unplatted tract, all being located in the S.W. 1/4 of the S.E. 1/4, Section 14, Twp. 33 N., Range 2 West of the 6th P.M. in Knox County, Nebraska, containing 0.95 acres, more or less.

OUTLOT 63

A tract of land located in the S.W. 1/4 of the S.E. 1/4, Section 14, Twp. 33 N., Range 2 West of the 6th P.M. in Knox County, Nebraska, containing 1.14 acres, more or less.

Robert B. Johnson
ROBERT B. JOHNSON P.E. 1578 L.S. 220

Subscribed and sworn to before me, and in my presence the 19th day of September, 1979 A.D.
My commission expires 6-9-81.