

Administrative Plat

for
a Lot Line Adjustment of a portion of the East half of Section 14, Township 33 North, Range 3 West, of the 6th Principal Meridian, Knox County, Nebraska.

Bearings are Grid, WGS84 Datum, obtained by direct observation using Survey grade GPS. Distances are ground in US Survey feet.

Surveyor's Statement

I, Michael Stroch, a Registered Land Surveyor in the State of Nebraska have conducted a survey of a portion of the East half of Section 14, Township 33 North, Range 3 West, of the 6th Principal Meridian, Knox County, Nebraska more particularly described as follows:

Beginning at the Center of Section 14; thence N00°03'16"E, along the West line of the Northeast quarter, a distance of 990.00 feet to the South line of the US Army Corps of Engineers Take Line; thence the following courses and distances along said Take Line:

thence S89°57'15"E a distance of 660.00 feet;
thence N00°03'16"E a distance of 165.00 feet;
thence S89°57'15"E a distance of 328.37 feet;

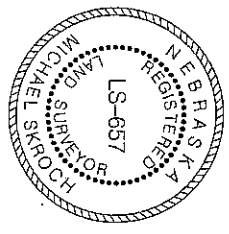
thence departing said Take Line, S00°05'21"E a distance of 592.62 feet; thence S52°20'08"W a distance of 1036.45 feet; thence N67°07'04"W a distance of 184.45 feet to the Point of Beginning.

Containing 19.257 Acres, more or less

I hereby state that I have executed this instrument on this 21st day of April, 2014.

Michael Stroch
Michael Stroch RLS #657

Surveyed for:
Jim Sorrell
5030 South 79th Ave
Ralston, Nebraska
68127

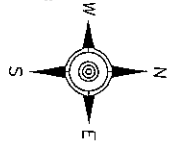


Approval of Administrative Plat was approved by Knox County on this 8th day of May, 2014

David A. Miller
Chairman

John M. Fischer
County Clerk

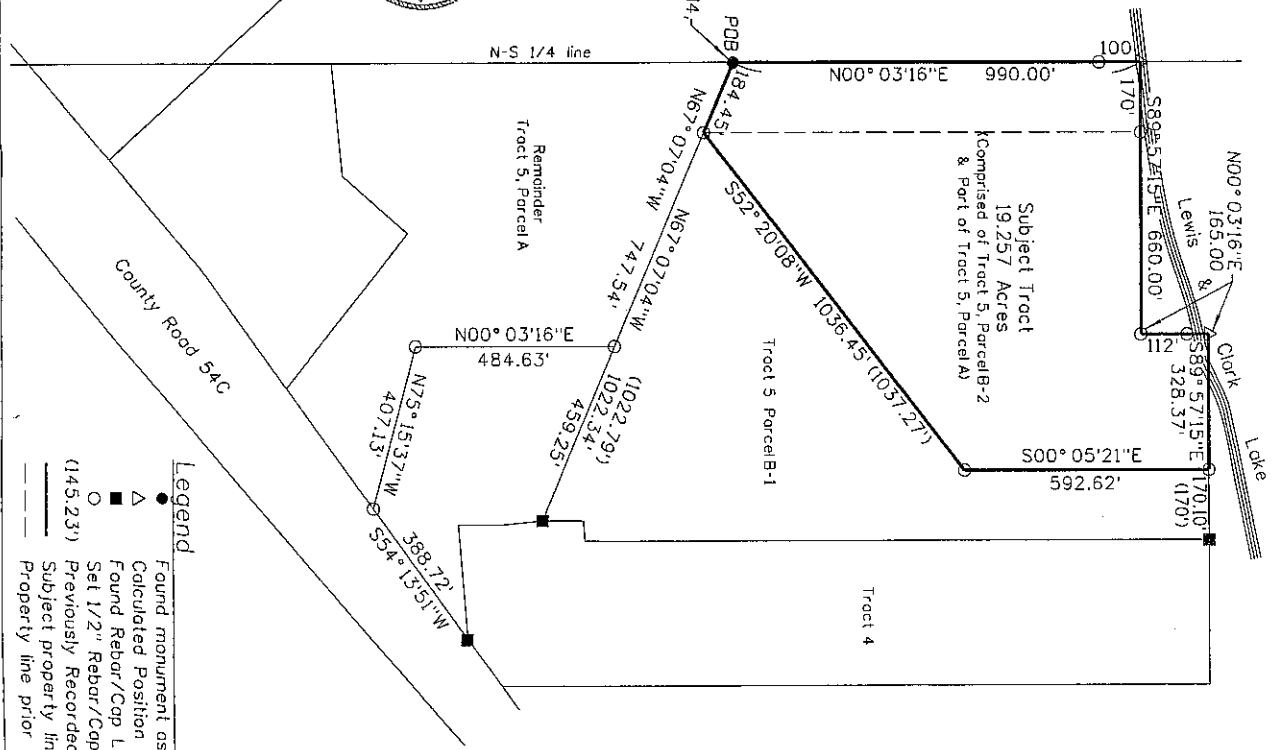
Dee Deere
Zoning Administrator



SCALE 1"=300'

Center of Section 14 E-NE 20.25' - Nail in 10" Burr Oak Corner is in North-South fence line Corner has T-post set Next to it

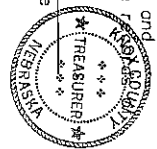
Center of Section 14 T33N, R3W found Corps of Engineers T-Bar & Button.



Knox County Treasurer's Certification

This is to certify that I find no regular or special taxes due or delinquent against the property described in the Surveyor's Statement and embraced in this plat as shown by the records of this office.

Steve Stroh
Knox County Treasurer
Date 5/5/14



Register of Deeds

State of Nebraska, Knox County, ss. filed for Record and Entered on Numerical Index this 13th day of May, A.D. 2014, of 1 o'clock and 35 minutes A.M. and recorded in Book Page 325 Slide 265
Recorded: Joann M. Fischer, County Clerk and Ex-Officio Register of Deeds, Ralston, Nebraska, Recording Clerk. Fee \$12.50.

Legend

- ▲ Found monument as noted
- Calculated Position
- Found Rebar/Cop LS #404
- Set 1/2" Rebar/Cop LS#657
- Previously Recorded Distance
- Subject property line
- - - Property line prior to adjustment

LANDMARK SURVEYING
PO Box 429
Bloomfield, Nebraska 68718
Phone 402-373-4647
landmarksurveying@gmail.com
513-120670